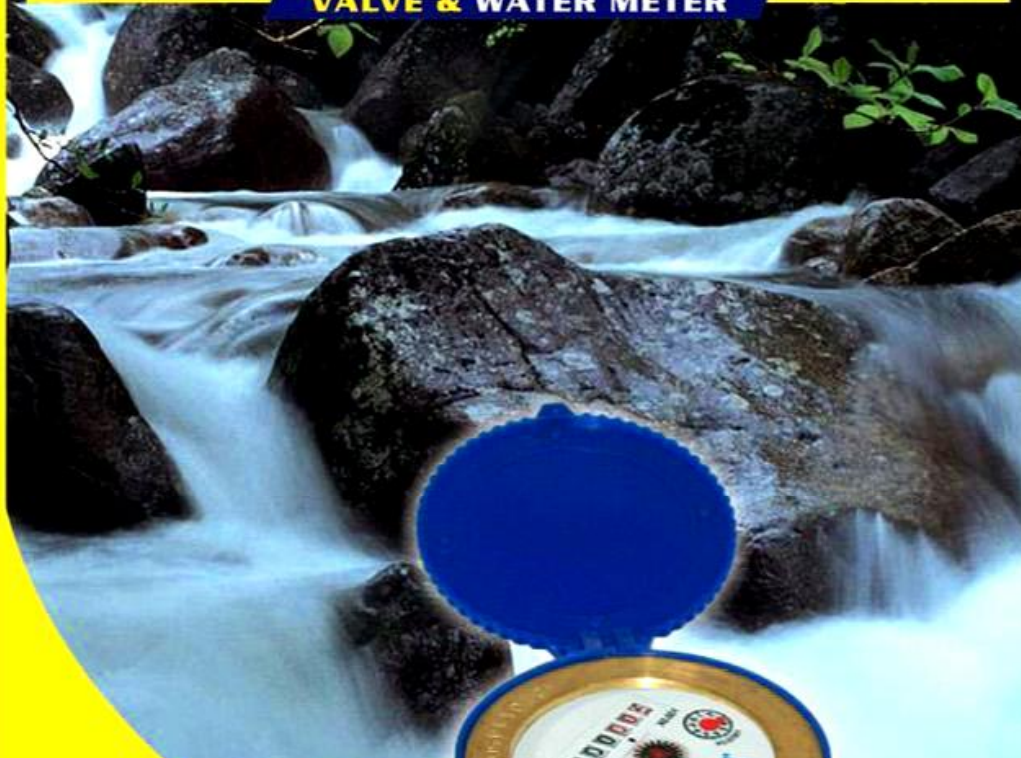




ONDA[®]



VALVE & WATER METER



**ROTARY-VANE DRY-DIAL
MAGNET-DRIVE**

**WATER METER
BRASS BODY**

FEATURE :

- * Dry - Dial
- * Multi - Jet
- * Magnetic Drive
- * B1 - Directional Flow
- * Antimagnetic Construction
- * Measuring accuracy conform to ISO 4064 class B standard



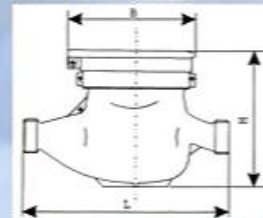
ONDA[®]



VALVE & WATER METER

TECHNICAL DATA

Nominal Diameter	DN	mm	15	20	25
Nominal Pressure	PN	Bar	10	10	10
Smallest Readable	Vol.	l	0.1	0.1	0.1
Registration Capacity		m ³	99999	99999	99999
Operating Temperature	Max	°C	50	50	50
Installation Position	Pipe		←→	←→	←→
	Meter		↑	↑	↑
	Head				
Maximal Flow Rate	Qmax		3	5	7
Nominal Flow Rate	Qn		1.5	2.5	3.5
Transitional Flow Rate	Qt	m ³ / h	0.12	0.20	0.28
Minimum Flow Rate	Qmin		0.03	0.05	0.07
Error Limits	Qmax..Qt		< ± 2	< ± 2	< ± 2
	Qmin		< ± 5	< ± 5	< ± 5
Dimensions in mm :					
	L :		165	190	260
	B :		99	99	104
	H :		104	106	120



Subject to modification without notice

AGEN :