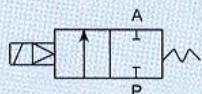


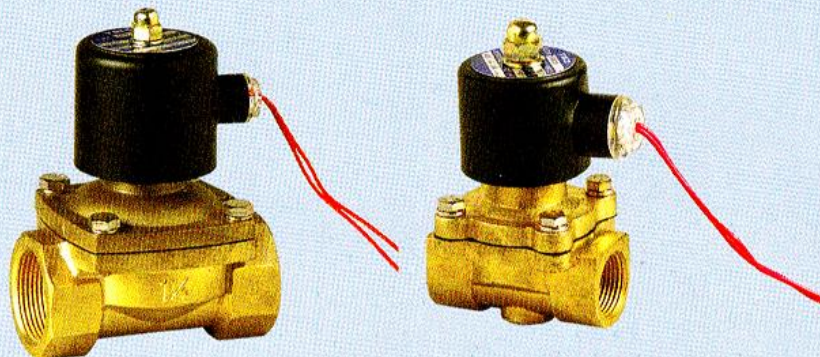
# UW Series Solenoid Valve



ISO 9001-2000



Graphics Sign



## ● Ordering Code

UW  
UW

10

Pipe Size :  
10 : ZG3/8  
15 : ZG1/2  
20 : ZG3/4  
25 : ZG1  
35 : ZG1<sup>1/4</sup>  
40 : ZG1<sup>1/2</sup>  
50 : ZG2

T

Blank : Standard Coil  
T : Rhombus Coil

AC 220 V

Standard Voltage :  
AC 110V  
AC 220V  
AC 380V  
DC 24V

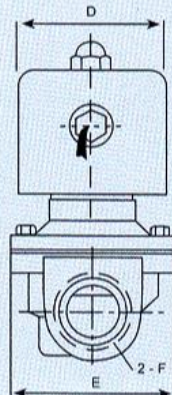
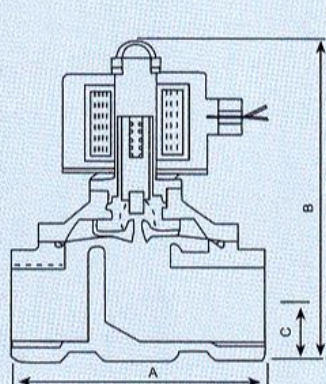
### Specific Property:

This guiding type valve adopts the diaphragm seal structure, with zero differential pressure starting function, large flow, simple structure, easy maintenance, good waterproof performance and multiple wiring directions.

## ● Technical Parameter

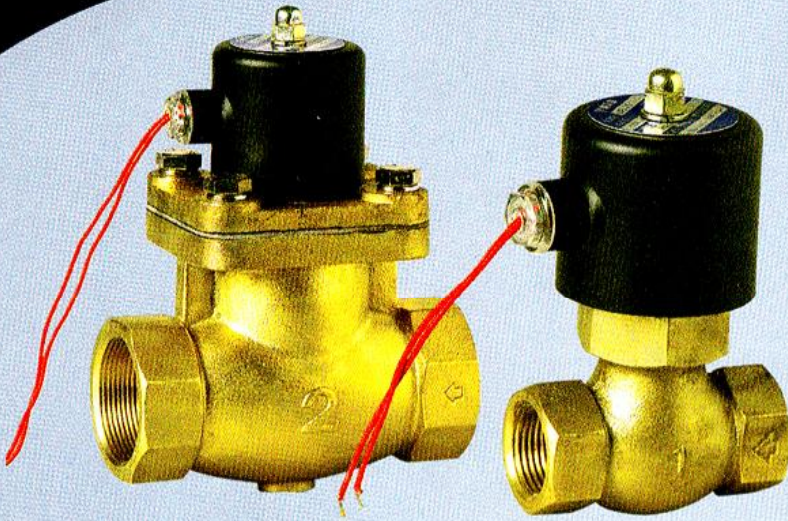
Item \ Specification	UW - 10/UW - 10T	UW - 15/UW - 15T	UW - 20/UW - 20T	UW - 25/UW - 25T	UW - 35	UW - 40	UW - 50
Material of Body	Foundry						
Operating Method	Film Pilot						
Pipe Size	ZG3/8	ZG1/2	ZG3/4	ZG1	ZG1 <sup>1/4</sup>	ZG1 <sup>1/2</sup>	ZG2
Nominal Diameter (mm)	16	20	20	25	37	37	50
Applicable Fluid	Air, Water, Oil						
Pressure Range	0 ~ 0,8 Mpa						
Applicable Temperature	-5 ~ 99°C						
Specified Voltage	AC 12V, AC 24V, AC 36V, AC 110V, AC 220V, AC 380V, DC 12V, DC 24V, DC 110V						
Operating Voltage Range	± 10 %						
Min. Activating Time	0,05S						
Install Method	Horizontal Fixing						

## ● Figure Dimension



Specification	A	B	C	D	E	F
UW - 10/UW - 10T	69	117	16	φ 50	57	ZG3/8
UW - 15/UW - 15T	69	117	16	φ 50	57	ZG1/2
UW - 20/UW - 20T	73	124	17	φ 50	57	ZG3/4
UW - 25/UW - 25T	99	135	23	φ 50	73	ZG1
UW - 35	123	172	30	φ 70	95	ZG1 <sup>1/4</sup>
UW - 40	123	172	30	φ 70	95	ZG1 <sup>1/2</sup>
UW - 50	168	209	37	φ 70	123	ZG2

# US Series Solenoid Valve



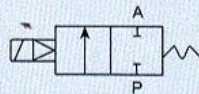
### ● Ordering Code

US	10	AC 220 V
US	Pipe Size :	Standard Voltage :
	10 : ZG3/8	AC 110V
	15 : ZG1/2	AC 220V
	20 : ZG3/4	AC 380V
	25 : ZG1	DC 24V
	35 : ZG1 <sup>1/4</sup>	
	40 : ZG1 <sup>1/2</sup>	
	50 : ZG2	

### Specific Property:

It adopts teflon hard seal structure, with reliable performance, anti corrosion, high-temperature resistance, large flow, high pressure, good waterproof performance and multiple wiring directions.

ISO 9001-2000

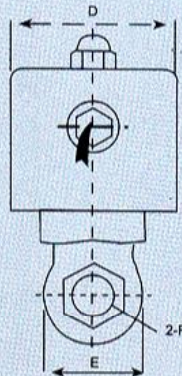
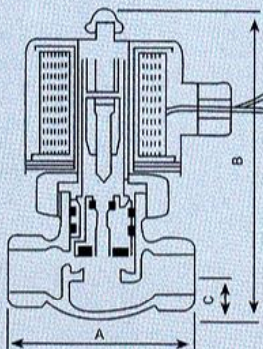


Graphics Sign

### ● Technical Parameter

Item \ Specification	US - 10	US - 15	US - 20	US - 25	US - 35	US - 40	US - 50
Material of Body	Foundry						
Operating Method	Plunger Pilot						
Pipe Size	ZG3/8	ZG1/2	ZG3/4	ZG1	ZG1 <sup>1/4</sup>	ZG1 <sup>1/2</sup>	ZG2
Nominal Diameter (mm)	17	17	17	20	30	30	50
Applicable Fluid	Air, Water, Oil, Steam						
Pressure Range	0,05 ~ 1,5 Mpa						
Applicable Temperature	-5 ~ 185°C						
Specified Voltage	AC 12V, AC 24V, AC 36V, AC 110V, AC 220V, AC 380V, DC 12V, DC 24V, DC 110V						
Operating Voltage Range	± 10 %						
Min. Activating Time	0,05S						
Install Method	Horizontal Fixing						

### ● Figure Dimension



Specification	A	B	C	D	E	F
US - 10	83	146	21	φ70	42	ZG3/8
US - 15	83	146	21	φ70	42	ZG1/2
US - 20	83	146	21	φ70	42	ZG3/4
US - 25	90	162	26	φ70	52	ZG1
US - 35	110	183	36	φ70	74	ZG1 <sup>1/4</sup>
US - 40	110	183	36	φ70	74	ZG1 <sup>1/2</sup>
US - 50	163	223	47	φ70	95	ZG2